

EvoTouch EvoTouch⁺

HIGH DEFINITION
ULTRASOUND
FOR **PRECISE**
GUIDANCE



Ultrasound for Anaesthesia & Intensive Care

Q Quante
medical

EvoTouch⁺

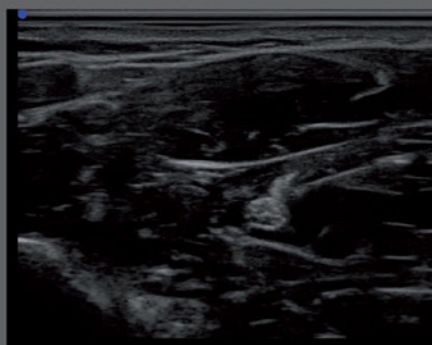
Quantel Medical, world leader in ophthalmic ultrasound, is presenting a new line of ultrasound scanners designed to meet the needs of anaesthesiologists and intensive care specialists.

Two **powerful, portable** ultrasound devices developed specifically for **regional anaesthesia** and **intensive care departments**.

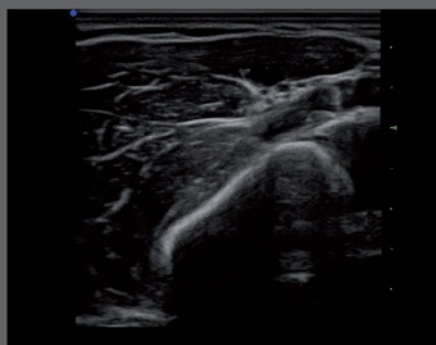
■ IMAGE QUALITY

High resolution image quality of **all anatomical structures** and **optimal visualisation of the needle** during ultrasound-guided procedures:

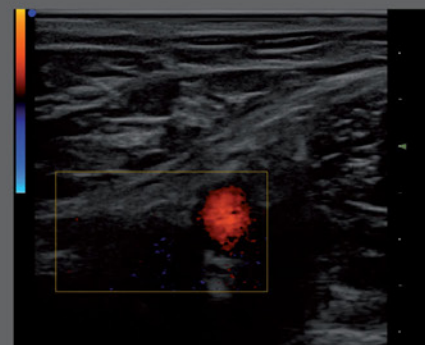
- integrated and programmable components to guarantee the acquisition of all details;
- powerful digital technology for optimal resolution;
- dynamic processing that adapts to the exploration depth for improved image clarity and perfect rendering of nerves and tissues.



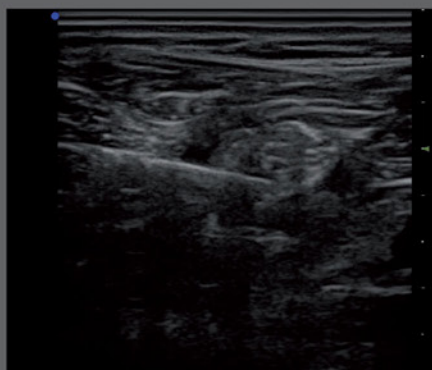
Median nerve



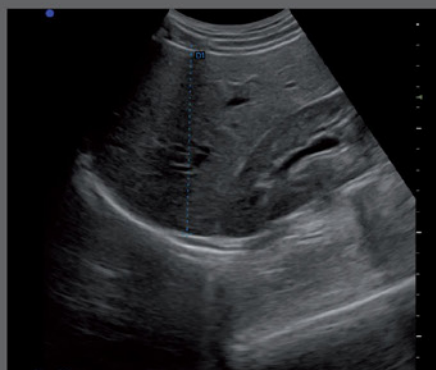
Interscalene block



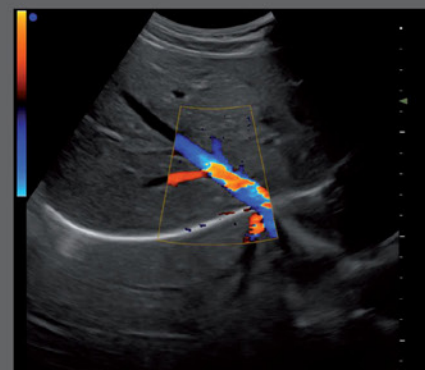
Femoral artery Doppler



Popliteal sciatic nerve block



Liver



Hepatic artery Doppler

■ PROBES

- **Very high-density probes** provide optimised visualisation of the needle and surrounding structures.
- A range of probes **adapted to the various needs of superficial and deep blocks**.



Ultrasound for Anaesthesia & Intensive Care

■ ERGONOMICS OF THE USER INTERFACE

- **Intuitive, simplified** interface for unrivalled fluidity while you work.
- **Only the necessary controls** are displayed.
- Optimised presets to help you **concentrate on the patient and the ultrasound-guided procedure**.
- **Personalisation of presets** to match the exact needs of each user.
- Rapid start-up so you can begin **working instantly**.

■ 3 USEFUL, UNIQUE, AND INNOVATIVE FEATURES



EvoScreen

Full touch screen.



EvoApp

The ability to consult ultrasound image and adjust settings on a tablet.



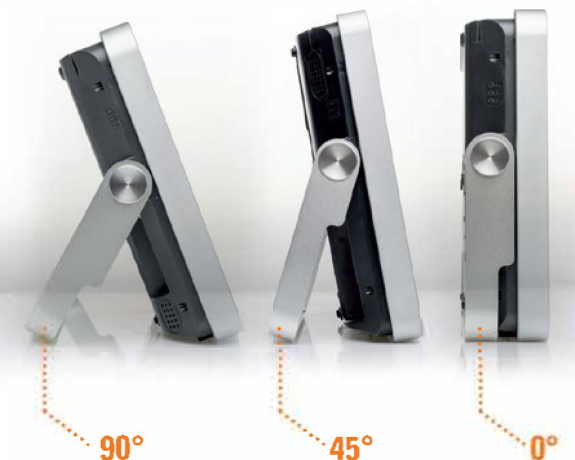
EvoTalk

Voice command to maintain control of image settings even when both hands are busy, and helping maintain the sterile field.



■ DESIGN AND CONNECTIVITY

- **Full touch screen** selected for its sturdiness and contrast for a perfect visibility of ultrasound images regardless of the viewpoint.
- Two screen sizes (**12 and 15 inches**) for integration of the ultrasound scanner in the operating room environment or in the post-operation recovery room.
- Button-free screen for easy cleaning.
- Ergonomic, light probes for improved working comfort.
- **Rechargeable long life battery**.
- **French design and manufacturing** for reliability and full control of the production line.
- Light and handy cart option.
- DICOM, USB, HDMI, WIFI, RJ45, etc.





EvoTouch⁺ EvoTouch⁺

• Screen:	12"	15"
• Probe connectors:	1	2
• Battery:	3 h	2 h
• Weight:	4 kg	5.9 kg
• Size:	32 x 25 x 5.8 cm	39 x 30 x 7 cm



EvoTouch EvoTouch+

TECHNICAL SPECIFICATIONS

EVOTOUCH / EVOTOUCH+

GENERAL INFORMATION

Size

EvoTouch:	32 cm (W) x 5.8 cm (D) x 25 cm (H)
EvoTouch+:	39 cm (W) x 7 cm (D) x 30 cm (H)
Weight:	EvoTouch: 4 kg EvoTouch+: 5.9 kg

Electrical power

Supply voltage:	100/120 Vac or 220-240 Vac, 50/60 Hz;
Power:	EvoTouch: 120W EvoTouch+: 200 W
Power supply:	Mains supply or battery (interchangeable)
Battery life:	EvoTouch: 3 hours EvoTouch+: 2 hours
Charging time:	3 hours
Internal voltage:	Max. 19 V

Tilting screens

Dimensions in inches:	EvoTouch: 12" EvoTouch+: 15"
LED-backlit LCD	

Portrait or landscape mode

VESA mount	
XGA format display:	Display size: 1024 x 768 Recording area: 1024 x 768
Ultrasound image:	600 x 600 in landscape mode and 600 x 720 in portrait mode

Stereo sound

IMAGING

Grey levels:	256
Dynamic range:	Up to 200 dB
Imaging modes:	<ul style="list-style-type: none"> • B Mode • Dual B Mode • Colour Doppler Mode (CFM-B) • Dual Colour Doppler Mode (CFM-B/B) • Pulsed Wave Mode (PW-B) • Anatomic M Mode • Power Doppler Mode (Power Doppler-B) • Dual Power Doppler Mode (Power Doppler-B/B)
Cineloop:	4 Cineloop lengths (adjustable)

CONNECTIVITY AND DATA MANAGEMENT

Probe connectors:	EvoTouch: 1 EvoTouch+: 2
USB ports:	EvoTouch: 2 3.0 USB ports EvoTouch+: 2 3.0 USB ports and 2 2.0 USB ports
1 RJ 45 connector; 1 video HDMI Integrated Wifi	connector; 1 audio jack connector (EvoTouch+);
DICOM:	Store and Print
Printers:	Installation and configuration of laser and thermal printers
Patient files:	Import, export, and consult patient files
Storage:	Integrated hard drive (500 GB capacity) EvoTouch: SSD 256 GB EvoTouch+: 500 GB

UNIQUE FEATURES

EvoScreen	Full touch screen
EvoApp	Consultation and adjustment on tablet
EvoTalk	Voice command



www.quantel-medical.com

Specifications are subject to change without notice.

©2018. Quantel Medical, EVOTOUCH and EVOTOUCH+ are registered trademarks of Quantel Medical. All rights reserved.

Headquarters

Quantel Medical
11, rue du Bois Joli - CS40015
63808 Cournon d'Auvergne – FRANCE
Tel.: +33 (0)4 73 745 745
Fax: +33 (0)4 73 745 700
Email: contact@quantel-medical.fr

Quantel
medical

CE

0459
ISO9001:2015-ISO13485:2016

Distributor: Equip Medikey BV | Edisonstraat 16J | 2809 PB Gouda | The Netherlands | T +31 (0)182-573 293 | F +31 (0)182-531 364

info@equip.nl | www.equip.nl | Rabobank Utrecht | IBAN: NL05 RABO 015.84.99.905 | BIC / SWIFT: RABONL2U

Kvk: 24400829 | VAT: NL817000240B01



XE_EVOTOUCH_BCG_AR_ANL_0419