

EvoTouch⁺ 7StarScope

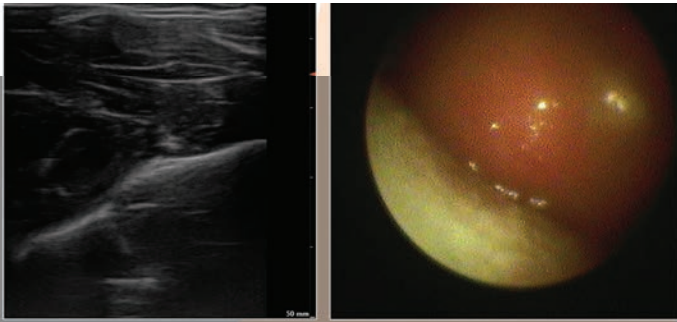
**ULTRASOUND GUIDED
MICRO-ENDOSCOPY**



Ultrasound platform & Micro-Endoscope

EvoTouch⁺

7StarScope



QUANTEL MEDICAL, WORLD LEADER IN ULTRASOUND TECHNOLOGIES, PUSHES BACK THE LIMITS OF MEDICAL IMAGING IN COUPLING IN ONE DEVICE AN **ULTRASOUND SCANNER** AND A **MICRO-INVASIVE ENDOSCOPE**, ALLOWING TO SEE THE INACCESSIBLE.



ULTRASOUND
SCANNER



ENDOSCOPE

FACILITATE AND SECURE MICRO-INVASIVE INTERVENTIONAL PROCEDURES

Technical limitations linked to both technologies can now be overcome thanks to this **unique coupling** and gives the possibility to manoeuvre your cannula for procedures in areas with limited access (behind bones, cartilage, nerves...):

- The **ultrasound scanner** is used for the **initial approach**.
- The **micro-invasive endoscope** allows for **precise visualisation** of the different body structures.

Ultrasound platform & Micro-Endoscope

■ NEW POSSIBILITIES

1 ULTRASOUND TRACKING

Ultrasound tracking enables a **precise guidance** of the cannula from the endoscope to the structures to be visualised and **improves the quality of the associated procedures**.



2 ENDOSCOPIC APPROACH

Although composed of **several thousand optical fibres** and **light fibres**, this micro-endoscope can be inserted directly into a **multi-ports cannula (18 gauge)**. The cannula offers the possibility to send a flush to **clean the lens**, to **hydro-dissect** or to **inject any solution**.

3 DIRECT VISION

The **coupling of ultrasound and endoscopic imaging** ensures a **direct high definition visualisation** of the structures of interest, facilitating echo-guided procedures whether in Pain management, or regional and local Anaesthesia, Orthopaedics, etc.

■ MICRO-ENDOSCOPE

MICRO
OPTICAL FIBER
WITH **INTEGRATED
ILLUMINATION**

HD LENS
WITH FIELD OF
VISION **120°**

MULTI-PORTS CANNULA
18 GAUGE

* Can be used all over the body of adult and paediatric patients, except for the central nervous system and ophthalmological applications.

■ A POWERFUL ULTRASOUND SCANNER

- During ultrasound guidance, the high-resolution ultrasound image allows an **optimised visualisation** of the needle and the surrounding anatomical structures.
- **Automatic adjustments** according to the areas explored.
- **Customisable menus** that can be adapted to the precise needs of doctors.
- **Rechargeable battery-powered** device: 2 hours of autonomy in examination.

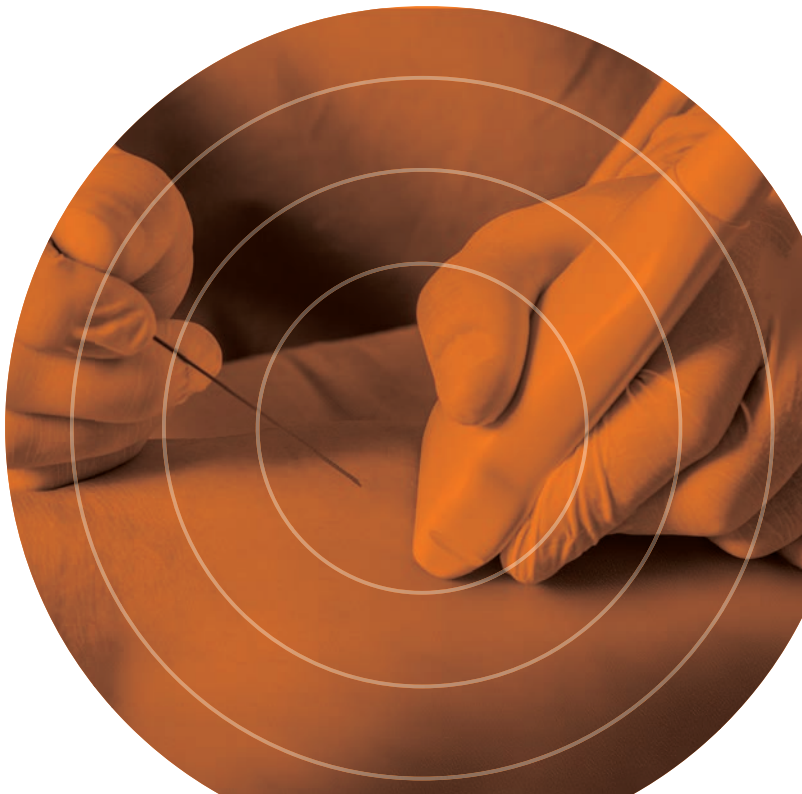


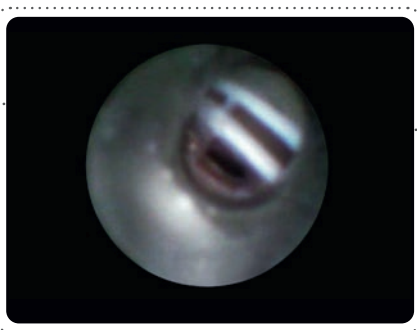
■ A GREAT EASE OF USE

- A **simplified user interface** that can be controlled from the touch screen to easily **switch from the ultrasound to the endoscopic image** in just one click.
- **Thin and light**, the fiber allows for an **easy handling** of the endoscope during the echo-guided procedures.
- **Small in size** and with a **long working autonomy**, the EvoTouch+7StarScope is a working partner **adapted to many environments**: operating theatres, emergency boxes, private practices, etc.

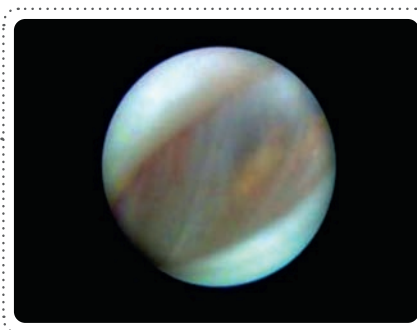
■ PROBES

- A **complete range of probes** covering many imaging needs (high frequency and high density).
- An **ergonomic design** for optimised manoeuvrability.
- A simple and quick changeover: **Plug & Play**.

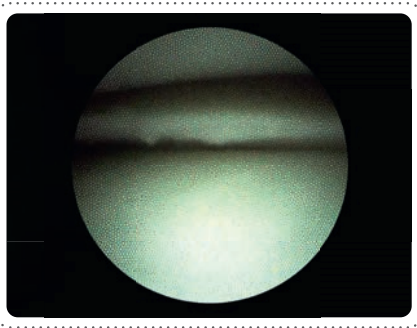




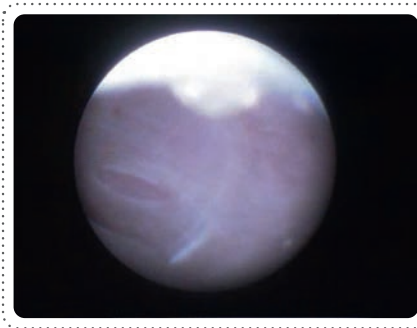
Brachial plexus
G.J van Geffen, G.J. Groen, M Gielsen, S.A. W. Broecheler



Temporo-mandibular joint
Dr Samer Srouji and Dr Joseph McCain



Knee meniscus
Prof. Boisgard



Paravertebral space, view on the pleura
Dr Rob van Seventer et Dr Mark Vogt



■ MANY ADVANTAGES

- The micro-endoscope allows for **percutaneous procedures** with less scars and lower post-surgical risks.
- The coupling of the two technologies gives the possibility to **follow-up patients** more easily thanks to the recorded procedures (echoguiding and endoscopic video).
- Increase in the **safety of the acts** by improving the **precision of the approaches**.
- Improved **diagnosis capacity** without using ionising imaging technologies.
- **Faster** and **more comfortable procedures** for the patient to increase the **post-operative satisfaction**.
- The colour image provided by the HD camera, displayed with the ultrasound image, makes it **easier to visualise** and **explore body structures** with **precision**.

EvoTouch⁺

7StarScope



7STARSCOPE

Optical system:

- Image control system
- Field of vision 120°
- Outer diameter 0.9 mm
- Length 180 mm
- Immersible in disinfection solution; can be sterilised by ETO gas sterilisation or with a low-temperature plasma: STERRAD® 100S
- Integrated fiber-optic lighting
- Reinforced nitinol optic

Camera:

- HD camera

Light:

- High power led approx. 500 000 Lux
- Colour temperature: 5600K

TECHNICAL SPECIFICATIONS

EVOTOUCH+

GENERAL INFORMATION

Size:	39 cm (W) x 7 cm (D) x 30 cm (H)
Weight:	5.9 kg
Electrical power	
Supply voltage:	100/120 Vac or 220-240 Vac, 50/60 Hz;
Power:	200 W
Power supply:	Mains supply or battery (interchangeable)
Battery life:	2 hours
Charging time (battery):	3 hours
Internal voltage:	Max. 19 V

Tilting screens

Dimensions in inches:	15"
LED-backlit LCD	
Portrait or landscape mode	
VESA mount	

XGA format display:

Display size: 1024 x 768 px
Recording area: 1024 x 768 px
600 x 600 px in landscape mode
600 x 720 px in portrait mode

Ultrasound image:

Stereo sound

IMAGING

Grey levels:	256
Dynamic range:	Up to 200 dB
Imaging modes:	<ul style="list-style-type: none"> • B mode • Dual B mode • Colour Doppler mode (CFM-B) • Dual Colour Doppler mode (CFM-B/B) • Continuous wave doppler mode (CW) • Pulsed Wave Mode (PW-B) • M Mode/Anatomic M Mode • Power Doppler Mode (Power Doppler-B) • Dual Power Doppler Mode (Power Doppler-B/B)
Cineloop:	4 Cineloop lengths (adjustable)

CONNECTIVITY AND DATA MANAGEMENT

Probe connectors:	2
USB ports:	2 x 3.0 USB ports et 2 x 2.0 USB ports
	1 RJ 45 connector; 1 HDMI video connector; 1 audio jack connector; Integrated Wifi.
DICOM:	Store and Print
Printers:	Installation and configuration of lasers and thermal printers
Patient files:	Import, export, and consult patient files
Storage:	Integrated hard drive 500 GB

Specifications are subject to change without notice.

©2020. Quantel Medical, EvoTouch+ and 7StarScope are registered trademarks of Quantel Medical. All rights reserved.

www.quantel-medical.com

Headquarters

Quantel Medical
Rue du Bois Joli - CS40015
63808 Cournon d'Auvergne - FRANCE
Tel: +33 (0)4 73 745 745
Email: contact@quantelmedical.fr



0459

ISO9001 : 2015 - ISO13485 : 2016



www.equip.nl

Distributor:

Equip Medikey BV / Edisonstraat 16J / 2809 PB Gouda / The Netherlands

T +31 182 57 32 93 / info@equip.nl / www.equip.nl

Rabobank Utrecht / IBAN NL05 RABO 0158 4999 05 / BIC/SWIFT RABONL2U / KvK 24400829 / VAT NL817000240B01

